

# EV Series (EV-CMS) Client Management Software

Manage up to 1024 cameras  
across 32 Network Video  
Recorders.

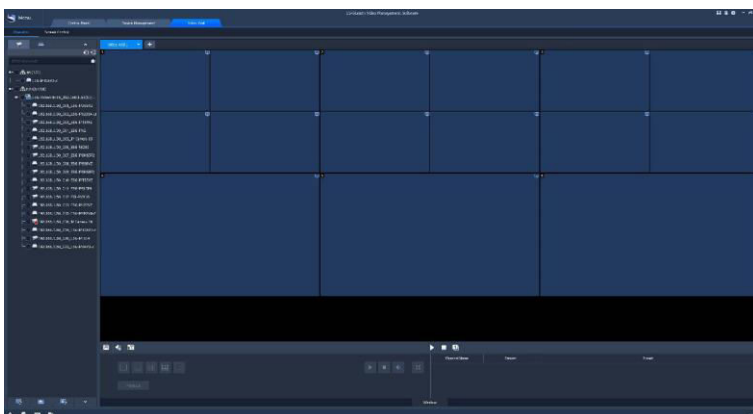
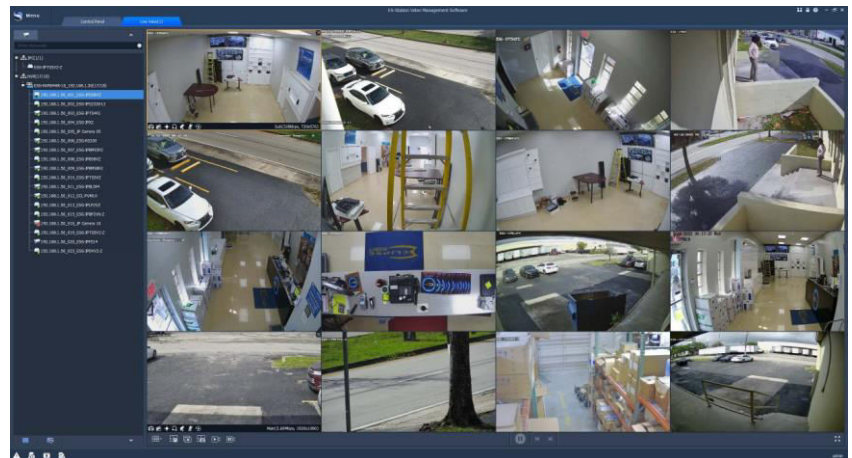
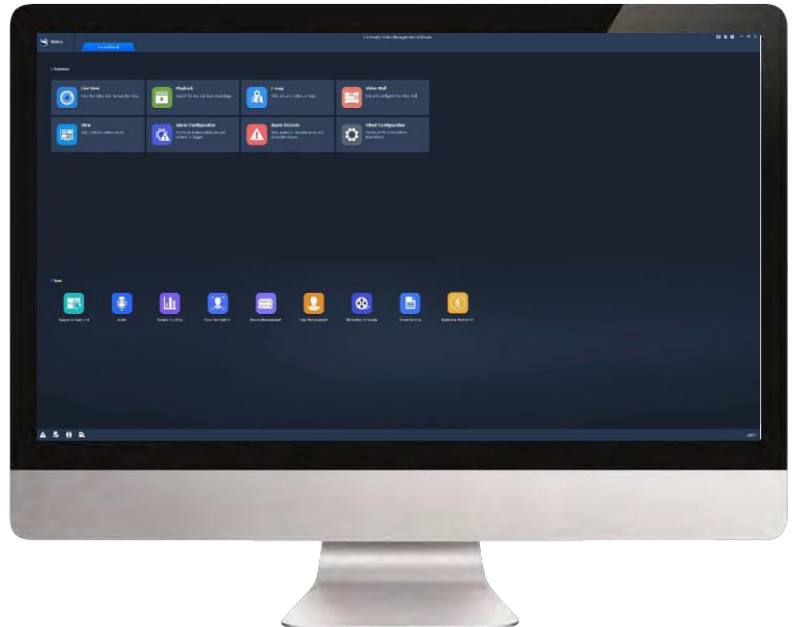
## Key Features:

### Advanced Integration

- Display up to 64 cameras simultaneously
- Multi-monitor support
- Video Wall management
- Support for individual IP cameras

### Advanced Functionality

- Up to 16ch synchronous playback
- Pan/Tilt/Zoom control
- E-Map
- Alarm management



## EV-CMS Specifications



Device Management	
EV-CMS	
Devices Supported	Max. 256 local channels and 128 cloud channels
	Max. 256 local encoding devices and 128 cloud devices
	Max. 32 decoding devices
	Max. 8 EV Recorder storage servers
	Max. 4 EV Streamer stream servers
Features	Auto device discovery, and adding, configuring, time adjusting in batch
Live Monitoring	
Screen Layout	1/ 4/ 5 /6 /8 /9 /10 /13 /16 /17 /25 /32 /36 split screen(s) with up to 1 sub screen <i>Note: Max. 64 channels live view</i>
PTZ Control	Pan, Tilt, Zoom, Preset, Patrol, 3D positioning, IR control, wiper control, heat control, snow removing <i>Note: To realize functionality above, please refer to the product's practical capacity.</i>
Features	Sequence display, snapshot, local record, audio, two-way talk, and instant playback
Playback	
Video Source	Recording video from DVR/NVR and EV Recorder
Max Channels	16 (Async)/16 (Sync)
Search Type	Time/event/calendar
Export File	.ts, .mp4
Features	Recording schedule and download, snapshot, -16x~16x speed for forward and backward, audio, digital zoom
Alarm	
Type	Service alarms and device alarms
Alarm Triggering	Live view, recording, email, preset, alarm output and etc.
Features	Alarm schedule, actions setup, alarm memo, alarm info popup
E-Map	
Format	PNG/JPEG/BMP
Map Alarm	Alarm flash, search and acknowledge
Features	Hot spot, hot region, map zoom in/out, map group, eagle eye
System Requirement	
Operating System	Microsoft Windows7/Windows8 (32-bit or 64-bit) <i>Note: ES Software only supports 64-bit system compatible with 32-bit.</i>
CPU	Intel Core i3 3.5 GHZ or higher
Memory	8GB or higher
Network Card	Gigabit Ethernet network card (or higher) are recommended
Display Resolution	1024*768 or higher (EV-CMS)